



Leptos Estates

the Leading property developers



PRICE: €117,300
(Inc. VAT if any)



Leptos Peyia Gardens

Apartment No: 106 Block D

1 Bedroom, 1 Bathroom

Total Cov. Area: 96 m²

The Property

- A/C provisions
- Aluminium shutters
- Covered parking
- Double glazed windows
- Fitted wardrobes
- Fly screens
- Granite kitchen worktops
- Mountain & Village view
- Upgraded bathroom & kitchen
- Vanity tops



Peyia Gardens offers an exclusive address with prime investment potential. This is a resort residence and is located in the fertile hills of the traditional village of Peyia.

The properties delight in sea and country views from 1, 2 and 3 bedroom apartments with open living spaces and relaxing sun terraces. Due to our long history of knowing our client's requirements we have also incorporated covered parking, elevators, roof terraces with panoramic views, stone and wooden pergolas into our design.

Residents enjoy the use of their large communal swimming pool and their environment with the sweet smell of citrus trees that fills the air.

Facilities and Amenities

- 3 mins drive to Coral Bay beaches
- 3 phase electricity
- Close to Peyia Village center
- Communal swimming pool
- Elevators
- Gated community
- Landscaped gardens
- Prime Investment potential
- Quite residential area
- Stone paved patios

Leptos Peyia Gardens (Location Map)

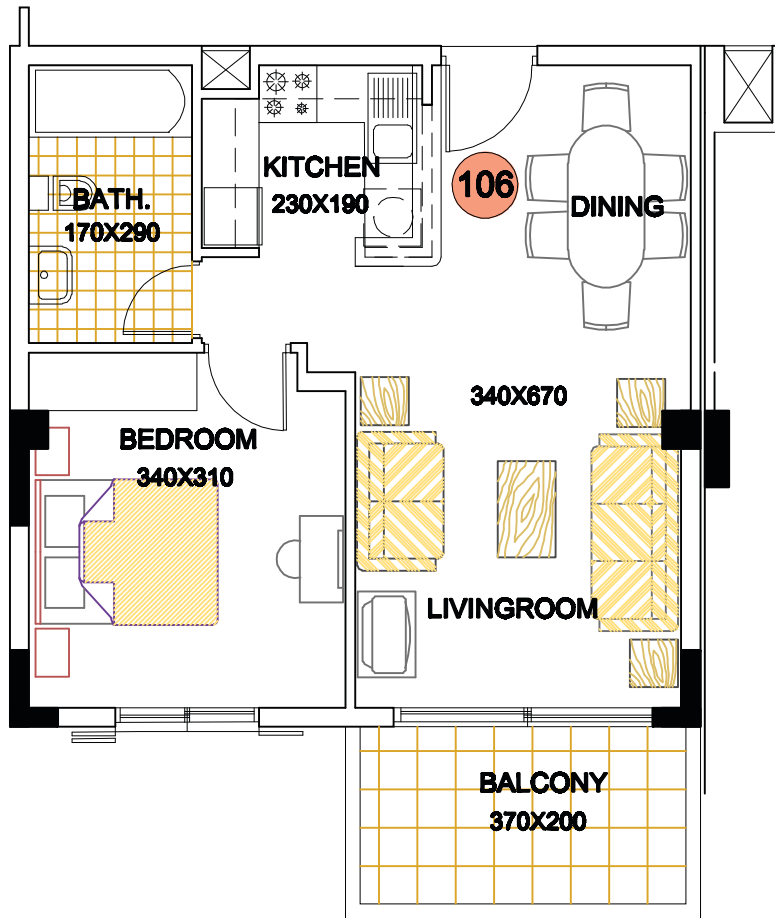


Leptos Peyia Gardens (Site Plan)

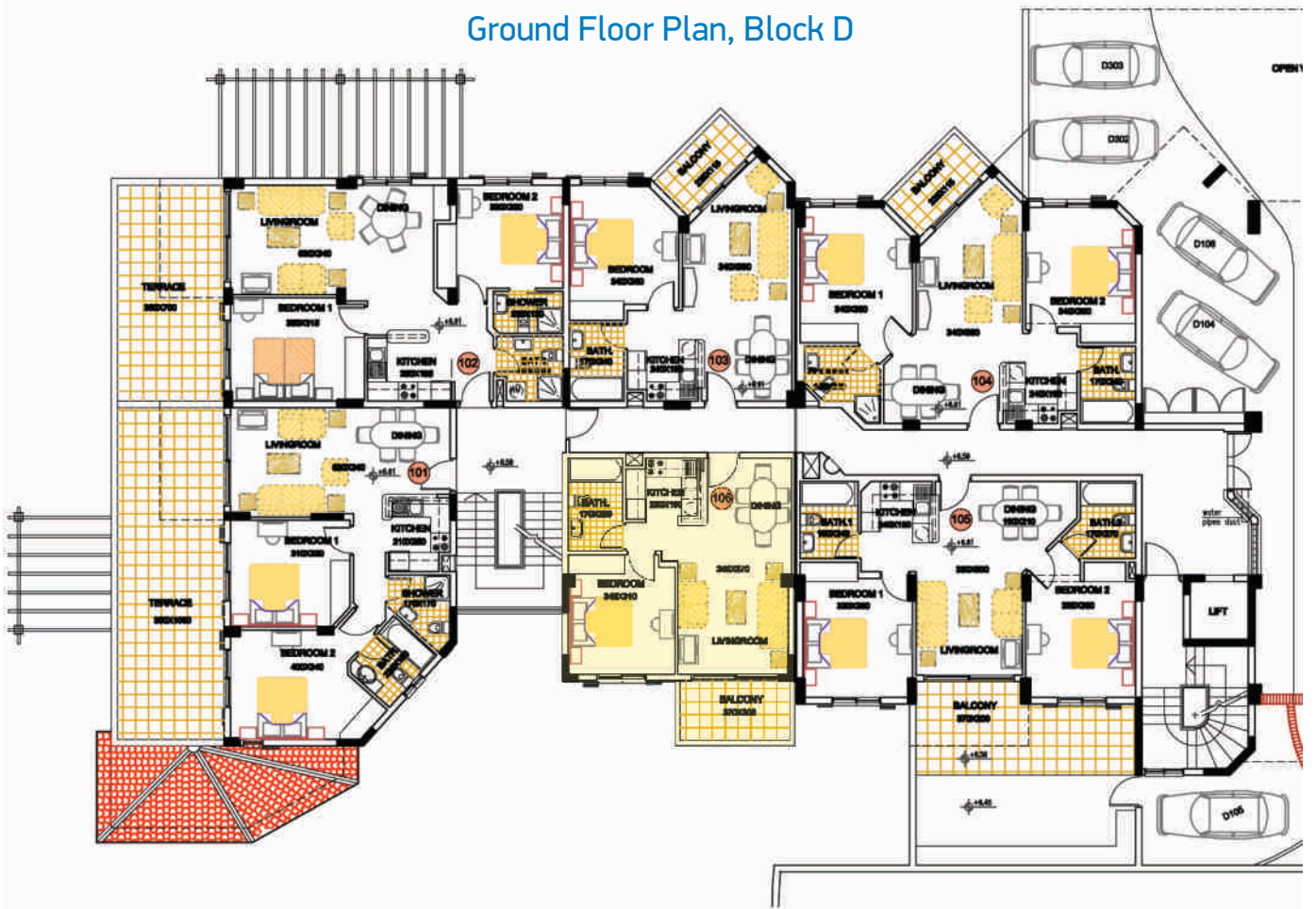


Leptos Peyia Gardens

Apartment 106, Block D



Ground Floor Plan, Block D





Leptos Estates
the Leading property developers

10,000,000 m² of ELEGANT LIVING
20,000 HAPPY HOME OWNERS
300 PRIME LOCATIONS TO CHOOSE FROM

A 50 year success story

Leptos Estates, a long established organization with 50 years of history, has achieved a leading position through the professionalism and team effort of its employees, its international network of sales service in 75 countries, its vast investment in land purchasing, and an effective after-sales service support.

Leptos Estates selects only the finest locations Cyprus has to offer in residential, retirement and holiday residences and uses the highest standards of construction and design, to build elegant homes to suit the lifestyle and taste of today's discerning property owners.

Over the years, Leptos Estates has successfully completed over 300 different home developments, boasting more than 20.000 happy home owners. The organization has an extensive land bank, owning prime locations in Cyprus and Greece (Athens, Paros, Santorini, and Crete). From luxurious beachfront villas to coastal condominium projects and rural properties.

Extensive in-house expertise enables Leptos Estates to offer clients a totally comprehensive service from land purchasing and architectural design through to construction and interior design. The organization has one of the largest technical departments in Cyprus, with many civil engineers, architects, interior designers and surveyors.

Leptos' major strength is the continuous redefinition of the term "Land development" within the framework of a deep rooted sensitivity for the protection of the environment.

Seafront Villas



Resort Residences



Hilltop properties



PROPERTY RESERVATION

Should you wish to reserve the home of your choice you would need to place a non-refundable but transferable deposit of €5,000 whilst the legal formalities are being completed. It is most important to bring with you your credit card, cash, a bank draft or travellers cheques.

USUAL TERMS OF PAYMENT

€5,000 deposit, 30%-40% downpayment, balance by bank loan.

€5,000 deposit, 30% downpayment, balance over long term finance. After delivery of the property interest is applied on the reducing balance basis.

SPECIAL TERMS OF PAYMENT

For a limited period as well as of our usual terms we offer more flexible terms of payments for these properties ie: 10% down payment (The buyer gets possession of the property), 5% in 6 months from delivery, 10% payable 12 months after delivery. 75% payable by bank loan or by inhouse finance over 108 equal monthly installments thereafter. Interest is charged at the rate of 9% per annum (for the inhouse finance) on any balance after delivery.

The information, plans, photos and artists' impressions contained in this publication are for guidance only and do not constitute a representation or an offer to treat. The Developer reserves the right to effect changes without prior notification. The prices indicated in this document are for guidance only and were correct at the time of sending this document and do not include additional purchase costs. For full details of such costs please refer to Leptos Estates, sales department.